

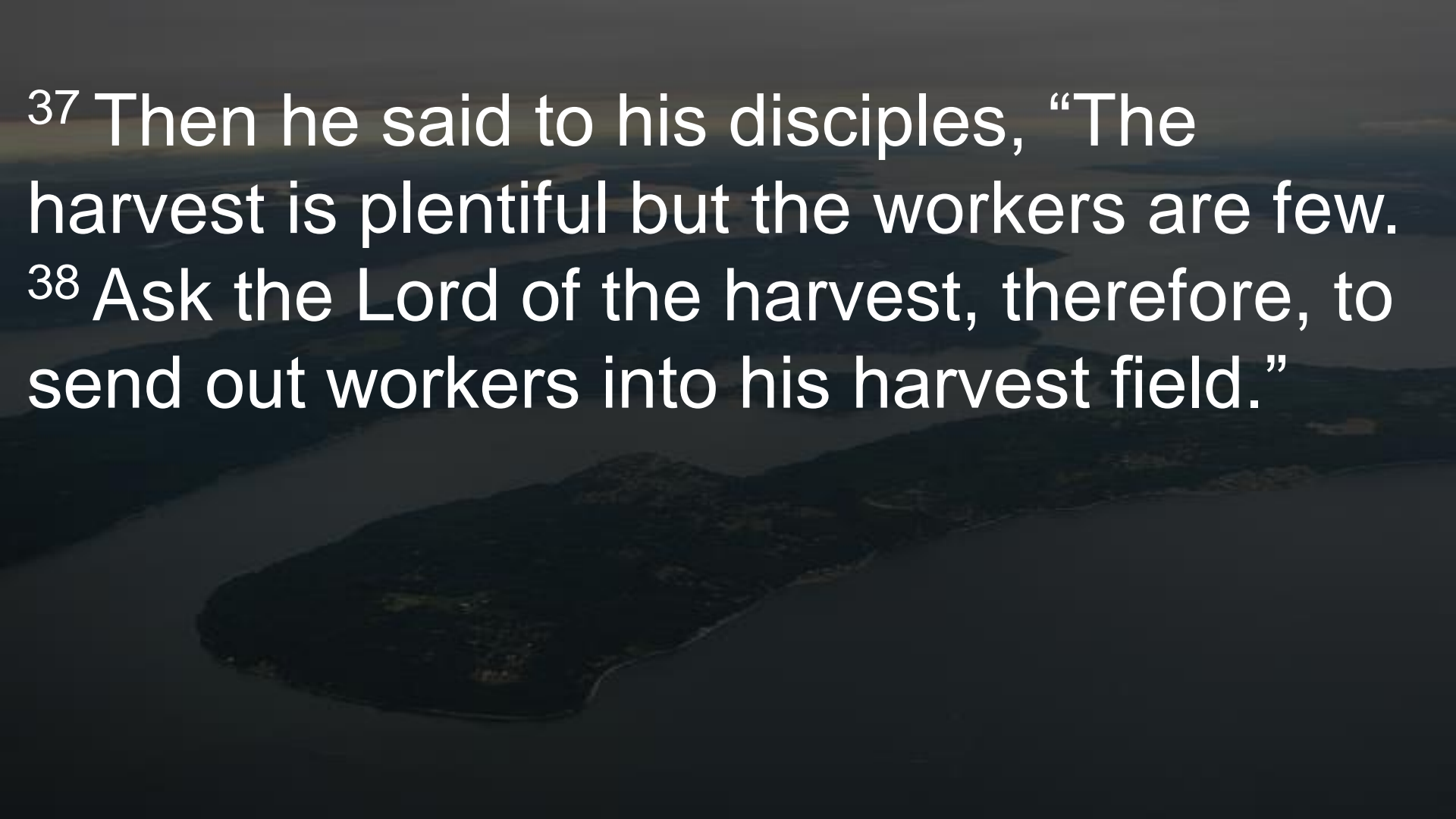
VISION SUNDAY 2017



Matthew 9:35-38

³⁵ Jesus went through all the towns and villages, teaching in their synagogues, proclaiming the good news of the kingdom and healing every disease and sickness.

³⁶ When he saw the crowds, he had compassion on them, because they were harassed and helpless, like sheep without a shepherd.



³⁷ Then he said to his disciples, “The harvest is plentiful but the workers are few.
³⁸ Ask the Lord of the harvest, therefore, to send out workers into his harvest field.”

Why does Bethel Church exist?



An aerial photograph of a large body of water, possibly a lake or a wide river, with a small, dark island in the foreground. The water is a deep blue-grey color, and the sky is a lighter, hazy blue. The overall scene is serene and expansive.

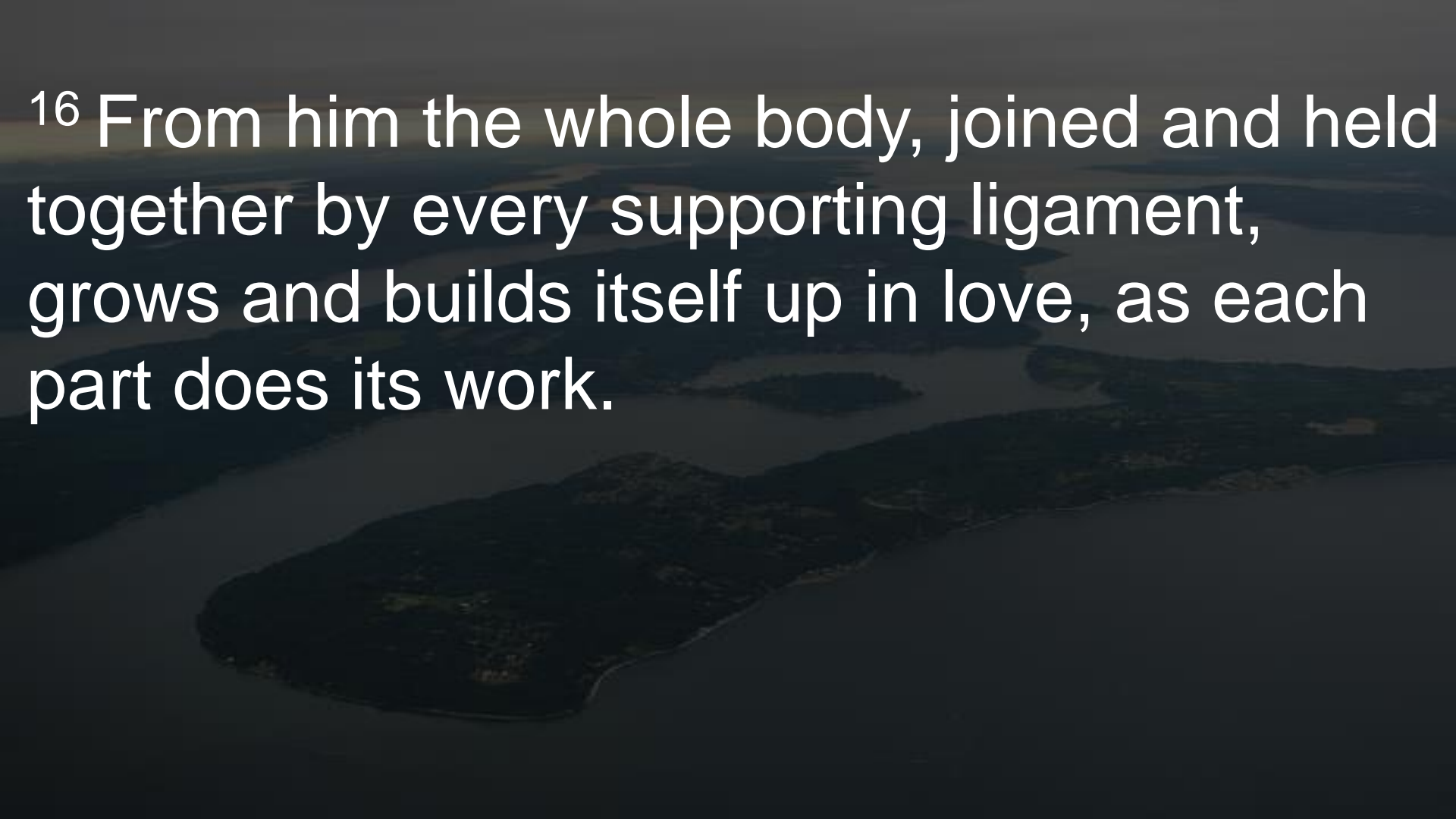
Why does Bethel Church exist?

Bethel Church exists
to help people
know and **follow** Jesus.

Ephesians 4:11-16

¹¹ So Christ himself gave the apostles, the prophets, the evangelists, the pastors and teachers, ¹² to equip his people for works of service, so that the body of Christ may be built up ¹³ until we all reach unity in the faith and in the knowledge of the Son of God and become mature, attaining to the whole measure of the fullness of Christ.

¹⁴ Then we will no longer be infants, tossed back and forth by the waves, and blown here and there by every wind of teaching and by the cunning and craftiness of people in their deceitful scheming. ¹⁵ Instead, speaking the truth in love, we will grow to become in every respect the mature body of him who is the head, that is, Christ.



¹⁶ From him the whole body, joined and held together by every supporting ligament, grows and builds itself up in love, as each part does its work.

Our Foundation:



Our Foundation:

1) God's Word

An aerial photograph of a large, dark, forested island or peninsula with a highly irregular, jagged coastline. The island is surrounded by a wide expanse of water, likely a bay or a large lake. The lighting is dim, suggesting dusk or dawn, with a soft glow on the horizon. The overall tone is dark and moody.

Our Foundation:

1) God's Word

2) Prayer

Our Foundation:

1) God's Word

2) Prayer

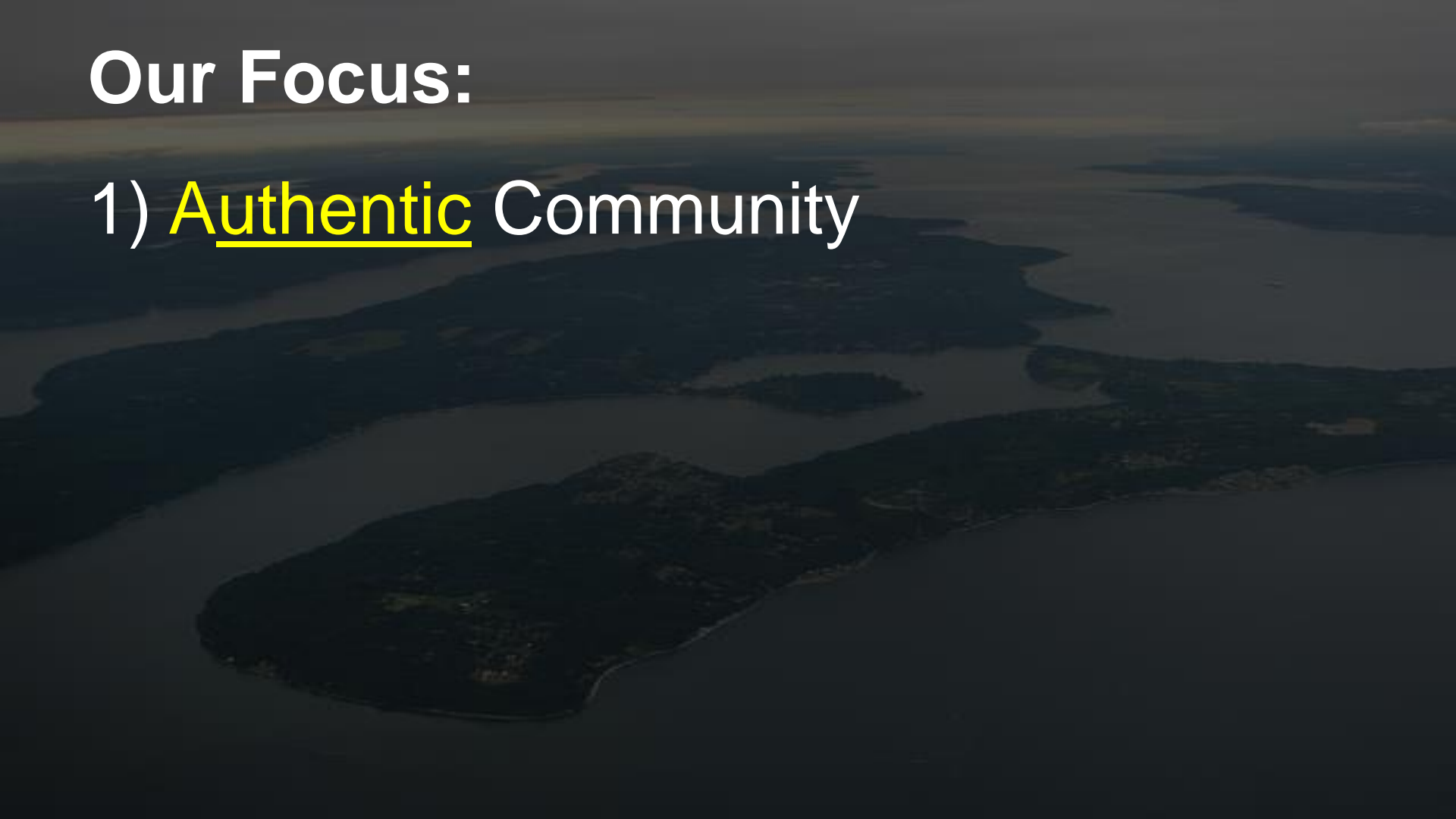
3) Loving God & Others

Our Focus:



Our Focus:

1) Authentic Community



Our Focus:

1) Authentic Community

2) Disciplemaking

National Association of Evangelicals 2015 Study

When do people make a decision to follow Jesus?

1% - 3 or younger

63% - 4-14

34% - 15-29

2% - 30 or above

(98% of people choose to follow Jesus before their 30th birthday)



Our Focus:

1) Authentic Community

2) Disciplemaking

Our Focus:

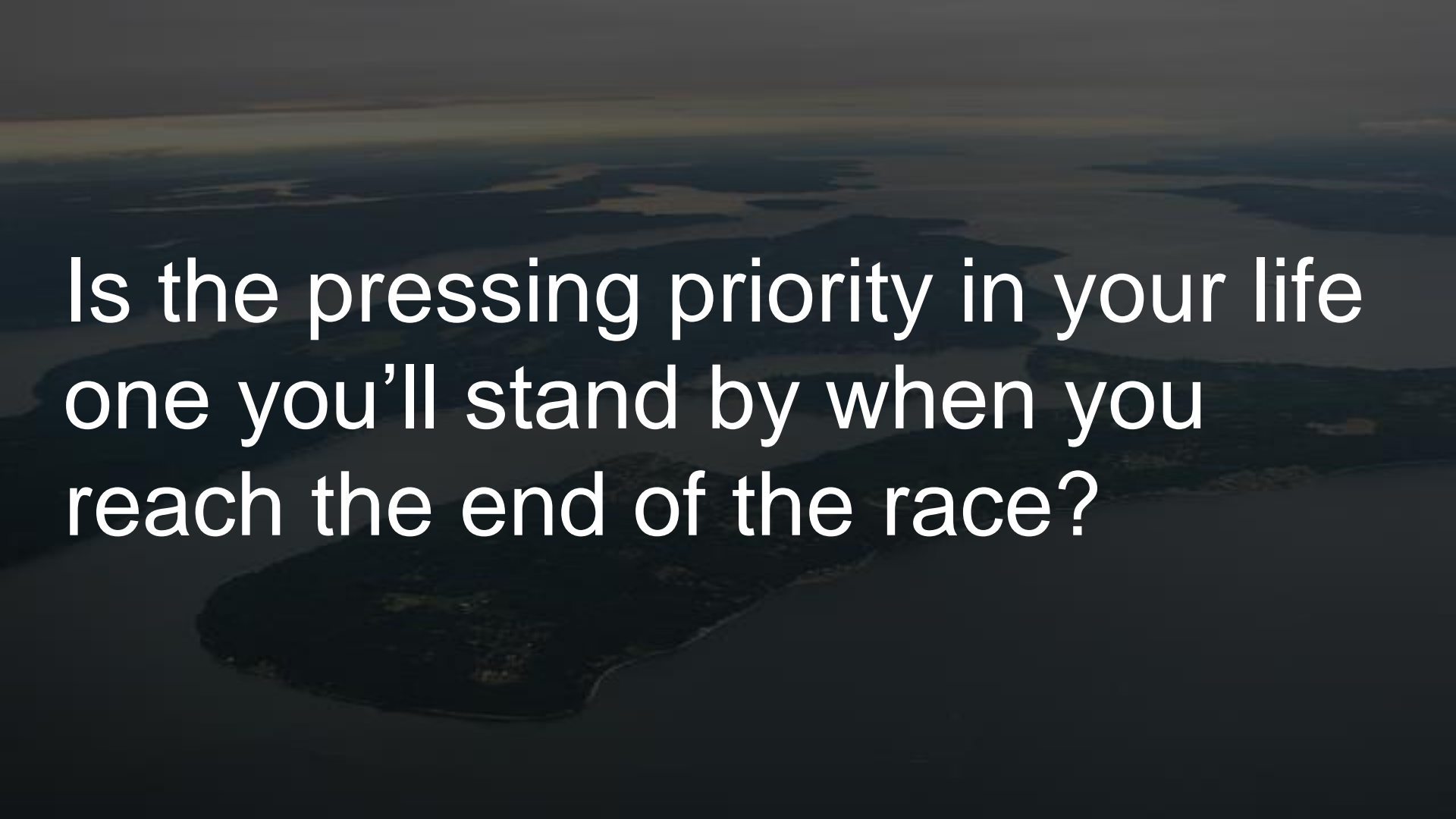
- 1) Authentic Community
- 2) Disciplemaking
- 3) Empowering Leadership

Our Focus:

- 1) Authentic Community
- 2) Disciplemaking
- 3) Empowering Leadership
- 4) Peacemaking

Our Focus:

- 1) Authentic Community
- 2) Disciplemaking
- 3) Empowering Leadership
- 4) Peacemaking
- 5) Serving selflessly and sacrificially

An aerial photograph of a coastal region, showing a large body of water in the foreground and middle ground, with a dark, forested landmass in the lower half. The background shows a hazy horizon over the ocean. The text is overlaid in white on the left side of the image.

Is the pressing priority in your life
one you'll stand by when you
reach the end of the race?

An aerial photograph of a large body of water, possibly a bay or a large lake, with a dark, forested island in the foreground. The water is a deep blue-grey color, and the sky is a pale, hazy blue. The island is a dark silhouette against the lighter water.

How I currently serve:

How I could use my God given
Gifts more effectively:

What changes must I make today?